

Tile, Terrazzo, Natural Stone, and Architectural
Surface Installation



Forty-five years of Tile, Terrazzo, and Stone craft across BC.



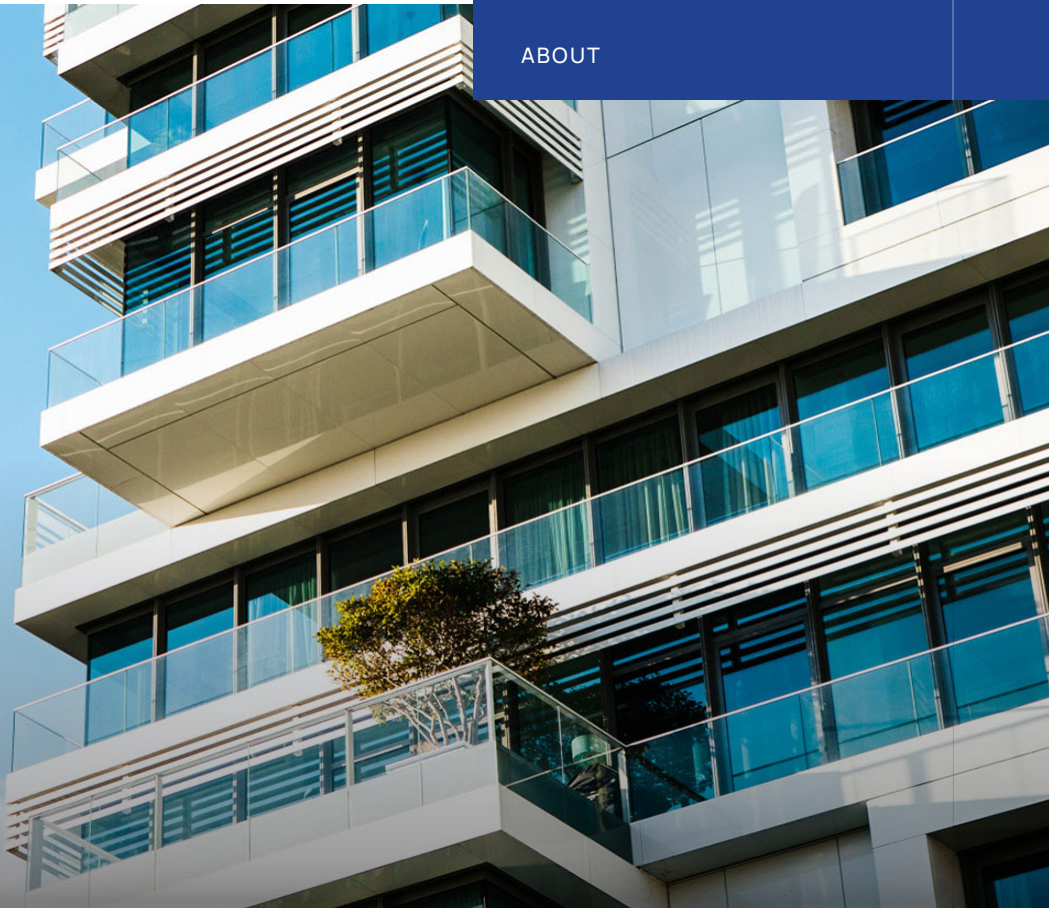
FOUR DIVISIONS. ONE STANDARD.

Bridgewater Tile installs tile, terrazzo, and natural stone across four divisions: Custom Residential, Multi-Family, Commercial, and Hotels. Each division is run by a dedicated Director with project managers, project coordinators, and estimators, with the same operational standards applied to every project regardless of sector or scale.

Material selection, sequencing, and installation are coordinated with general contractors and developers from pre-construction through final turnover. Substrate readiness is confirmed before work begins, and sequencing aligns with the broader construction schedule. The team handles standard

tile, terrazzo, and stone scope, along with architectural surface specialties: large-format slab installations and custom fabrication that few BC installers are equipped to deliver.

Tile. Terrazzo. Stone.
One Company.
Four Divisions. One Standard.



PROJECT SCALE


**1200+
Units**

Largest multi-family tower scope per project


**45+
Years**

Operating across BC


**4
Divisions**

Custom Residential, Multi-Family, Commercial, Hotels


Hotel Anchors

Rosewood Georgia, Shangri-La, Four Seasons Whistler

LONG-TERM DEVELOPER RELATIONSHIPS

Bridgewater Tile's reputation is built by working with established developers, general contractors, and home design builders across BC. Long-standing relationships with Onni, Leducor, Bosa, Anthem, Aquilini, and Vancouver's top hospitality groups reflect what matters most on projects of this scale: consistent delivery, schedule reliability, and craft standards held across every phase.

Anchor projects span hotels, multi-family towers, and commercial. Hotels include the Rosewood Hotel Georgia and

Shangri-La in Vancouver, the Four Seasons Hotel Whistler, and the original Whistler hotels (Nancy Green Lodge, Clock Tower, Delta Suites). Multi-family work includes SOCO Anthem, Pier West (Bosa), Gilmore Place (Onni), King George Phase D (Leducor), and Broadway and Granville Phase 1 and 2 (Leducor). Commercial work includes Oakridge Mall Redevelopment Project, Royal Center Exterior (Leducor), AbCellera (Lark), Simon Fraser University, and Tsawwassen Boardwalk Phase 2 (Aquilini).

Scope of Work



ARCHITECTURAL SURFACES

Large-format porcelain and stone, custom slab installations, and architectural wall systems. Capability that few BC installers carry.



FLOORS

Tile, hardwood, linoleum, carpet, institutional surfaces, and more.



STONE & TERRAZZO

Natural stone, slab work, mortar bed, and terrazzo installation.



SPECIALTY SYSTEMS

Floor heating, waterproofing, pool installations, and exterior wall and floor installations.

CONTACT

QUALIFICATIONS & CAPACITY

Founded in 1979. Forty-five years of work with major developers, general contractors, and home design builders across BC. Active WorkSafeBC coverage and full liability insurance, with all subcontract trade partners verified before mobilization. Long-standing member of the Terrazzo Tile and Marble Association of Canada (TTMAC) and the National Floor Covering Association of Canada (NFCA).

Part of the Bridgewater Surfaces Group

Bridgewater Tile is part of the Bridgewater Surfaces group, which delivers the full surface scope across BC: substrate preparation, hard and soft flooring, tile, terrazzo and natural stone, countertops and stone fabrication, wall systems, window coverings, exterior pavers and pedestal decks, and pool installations. Within the group, Bridgewater Tile handles tile, terrazzo, and natural stone under the same standards that defined the original business.

Contact

Contact Bridgewater Tile to discuss tile, terrazzo, or stone scope on your upcoming project.

[View Company Website](#)

[CLICK HERE](#)

604.291.1219 | bridgewatertile.com

 **BRIDGEWATER
TILE LTD.**

